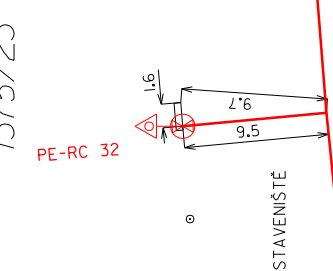


ZAKAZKA	GEODETIKÝ ZÁMĚR SKUTEČNÉHO PROVEDENÍ ST PLYNOVODU PE-RC 110, 63 A PŘÍPOJEK PE-RC 32 ZTV SLANÝ - SEVER - I. ETAPA SLANÝ			
DODAVATEL	Nálezitostmi a přesností odpovídá právním předpisům.			
ZAMERIL A ZPRACOVAL	ov.č. 43/2023, datum 9.5.2023 Ing. Ondřej Balcar			
DATUM	MERITKO	S-SYSTEM	V-SYSTEM	SITUACE
05/2023	1 : 500	JTSK	Bpv	2

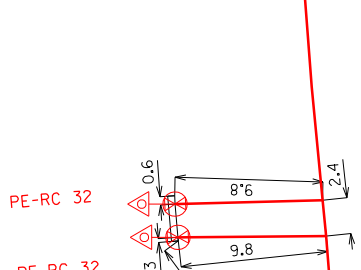
764 350 + 1023 050

+

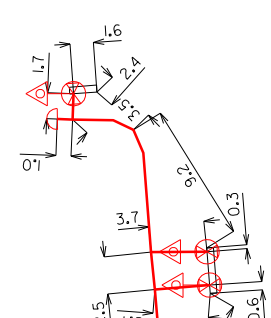
1375/23



1375/22



1375/32



1375/33

PE-RC 32
PE-RC 32

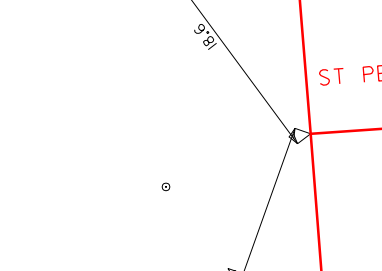
1375/34

ST PE-RC 63 2023

1375/35

PE-RC 32

1375/21

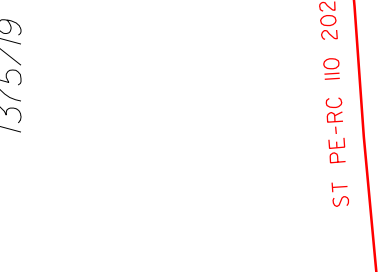


1375/20

PE-RC 32
PE-RC 32

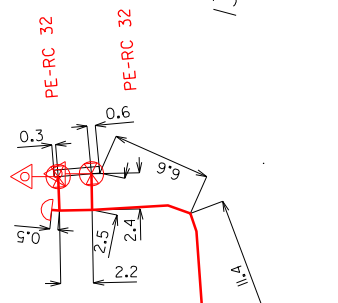
ST PE-RC 110 2023

1375/19



1375/36

1375/37



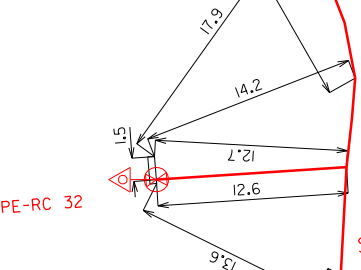
1375/38

PE-RC 32
PE-RC 32

1375/39

ST PE-RC 63 2023

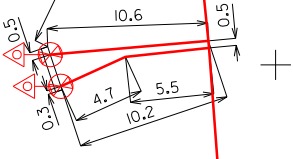
1375/17



1375/16

PE-RC 32
PE-RC 32

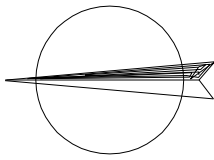
1375/41



STAVENÍŠTĚ

ST PE-RC 110 2023

1375/40



764 450 + 1023 100